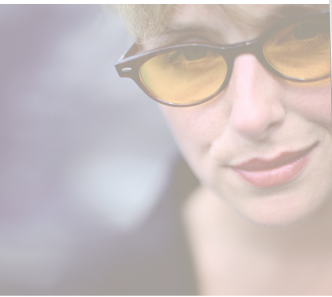




Your Gateway Plasma TV  
GTW-P46M103

# user's guide



Setting up

Troubleshooting








# Contents

<b>1</b>	<b>Introducing Your Gateway Plasma TV</b>	<b>1</b>
	Features	2
	Important safeguards	3
	Package contents	5
	Accessories	7
	Turning on your plasma TV	8
	Front controls	10
	Back panel connections	12
	Audio, video, RGB, and DVI connections	13
<b>2</b>	<b>Connecting Components</b>	<b>15</b>
	Understanding video connections	16
	Connecting your DVD player	17
	Using component video (AV2)	17
	Using S-Video (AV1)	18
	Using composite video (AV1)	19
	Connecting your HDTV decoder set-top box	20
	Using component video (AV2)	20
	Using RGB video	21
	Connecting your VCR or video camera	22
	Using S-Video (AV1)	22
	Using composite video (AV1)	23
	Using coaxial (RF) audio and video (VCR only)	24
	Connecting off-air TV or cable TV	25
	Using coaxial (RF) audio and video	25
	Connecting a computer	26
	Using DVI video	26
	Using RGB video	27
<b>3</b>	<b>Adjusting Your Plasma TV Settings</b>	<b>29</b>
	Using the OSD	30
	OSD menus and options (TV, AV1, and AV2 video sources)	31
	OSD menus and options (DVI or RGB video sources)	34
<b>4</b>	<b>Maintenance and Troubleshooting</b>	<b>37</b>
	Cleaning and maintenance	38
	Cleaning the screen	38
	Cleaning the exterior	38

Avoiding image burn-in .....	39
Troubleshooting .....	39
Telephone support .....	41
<b>A Safety, Regulatory, and Legal Information.....</b>	<b>43</b>
<b>Index.....</b>	<b>49</b>



# Introducing Your Gateway Plasma TV

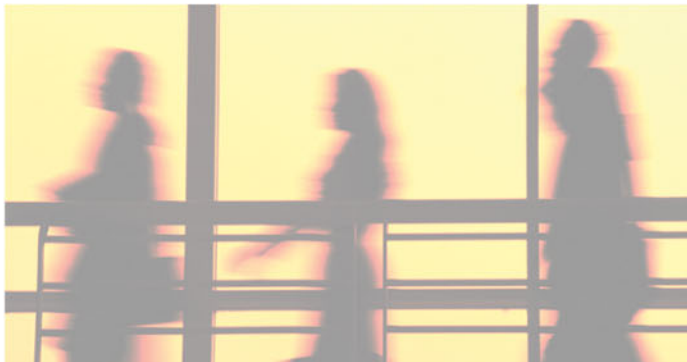
# 1

This chapter provides basic information about your Gateway Plasma TV.

Read this chapter to learn about:

- Features
- Warnings and safeguards
- Package contents
- Controls and connections

Illustrations in this guide show the TV mounted to the stand. You may have purchased the wall mount instead.



# Features

Your plasma TV features:

- Bright, flicker-free image
- Automatic detection and conversion of film content for correct display with minimal motion artifacts (noise)
- Accurate color processing
- Picture-in-picture (PIP)
- HDTV signal compatibility using an external HDTV decoder with RGB or component video outputs
- Advanced Zoom and Freeze functions
- Multi-Scan support
- Selectable fixed/variable audio outputs
- Built-in internal amplifier and speakers
- Built-in Digital Visual Interface (DVI) to eliminate the need for digital-to-analog conversion
- 852 × 480 XGA support for computer input.
- 720p and 1080i support for HDTV signals

# Important safeguards

## Warning



## Risk of electric shock - Do not open

To reduce the risk of electric shock, do not remove the back cover. There are no user-serviceable parts inside.

Removing the back cover voids the warranty.

Have your plasma TV repaired by qualified service personnel only.

## Warnings and precautions

- Do not place your hands, face, or objects close to the ventilation openings of your plasma TV. The top of your plasma TV gets very hot from exhaust air that is released through the ventilation openings. Burns or personal injuries may occur if you are too close to the plasma TV. Damage may occur if you place any object near the top of your plasma TV.
- Disconnect all cables before moving your plasma TV. Moving your plasma TV with its cables attached may damage the cables and cause fire or electric shock danger.
- Do not expose your plasma TV to rain or moisture.
- Keep your plasma TV away from excessive dust, high temperatures, moisture, or direct sunlight.
- Use your plasma TV in a well-ventilated area and do not cover the ventilation openings.
- Do not modify your plasma TV or use an unshielded power cord or video input source cable, or you may experience excessive interference.
- Disconnect your plasma TV and unplug the power cord when the TV is not used for a long period of time.
- If the picture displayed is in any way abnormal, turn off your plasma TV, then disconnect it from the electrical outlet. Make sure that your video input source cable is connected correctly, then reconnect your plasma TV to the electrical outlet.
- Disconnect your plasma TV from the electrical outlet before cleaning or performing maintenance. Do not use liquid or aerosol cleaners. Use only a slightly damp cloth for cleaning.
- Do not place your plasma TV on an unstable cart, stand, or table. Your plasma TV may fall, causing serious damage.



- Do not place your plasma TV on a bed, sofa, rug, or other similar surfaces.
- Never place your plasma TV near or over a radiator or heat source.
- Do not install your plasma TV in an enclosed area unless correct ventilation is provided.
- Your plasma TV should be operated from the type of power source indicated on the label. If the type of available power is unknown, consult your electrician or local power company.
- Your plasma TV is equipped with a 3-pin grounded plug. The plug will only fit into a grounded power outlet. This is a safety feature. If you cannot plug the power cord into the outlet, contact your electrician. Do not alter the plug because this will defeat the safety feature.
- Do not rest objects on the power cord and avoid placing the power cord near high traffic areas.
- Do not overload wall outlets and extension cords because this can result in a risk of fire or electric shock.
- Unplug your plasma TV and contact qualified service personnel if:
  - The power cord or plug is damaged or frayed.
  - Liquid has been spilled into your plasma TV.
  - Your plasma TV has been exposed to water or moisture.
  - Your plasma TV does not operate normally when the operating instructions are followed. Adjust only those controls that are covered by the operating instructions. Incorrect adjustment of other controls may result in damage which often requires extensive work by a qualified technician to restore your plasma TV to normal operation.
  - Your plasma TV has been dropped or the cabinet has been damaged.

### **Avoid image burn-in**

- Displaying the same stationary images over an extended period of time, such as a black bar, stock ticker, video game, or a shopping channel logo, can leave a permanent ghost image (burn-in). Avoid burn-in by mixing your viewing patterns. Do not show the same stationary image for more than 15% of your total TV viewing in any one week.
- Use the Image Move option in the on-screen display (OSD) menus to reduce the chance of image burn-in. For more information, see “Advanced” on page 33 and “Advanced” on page 36.

Your warranty does **NOT** cover screen burn-in.

# Package contents

Along with your plasma TV, the packaging box contains the following items:

---

## Remote control



---

## Two AA batteries



---

## Power cord



---

## User guide



---

## Remote control user guide



# Accessories

You can purchase these optional accessories for your plasma TV:

- **Stand mount kit.** The stand mount kit contains all of the required hardware for mounting your plasma TV to a stand. For more information, see the Stand Mount Installation Guide at [support.gateway.com](http://support.gateway.com).
- **Wall mount kit.** The wall mount kit contains all of the required hardware for mounting your plasma TV on your wall. (Gateway recommends you use a qualified installer.) For more information, see the Wall Mount Installation Guide at [support.gateway.com](http://support.gateway.com).
- **Cable kits.** Gateway cable kits consist of high-quality gold cables of various lengths, including:
  - RCA composite video cable
  - S-Video cable
  - RCA component video cable
  - RCA audio cable
  - VGA video cable
  - DVI-D video cable

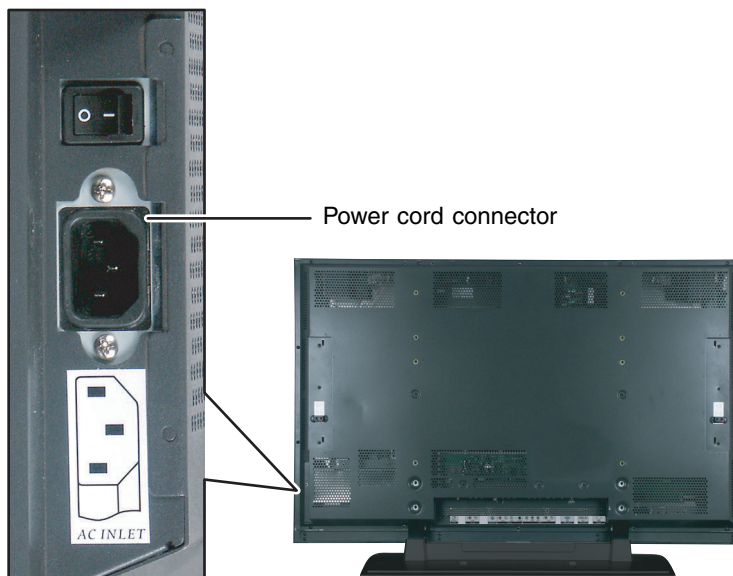
Contact Gateway for these and other accessories.

# Turning on your plasma TV



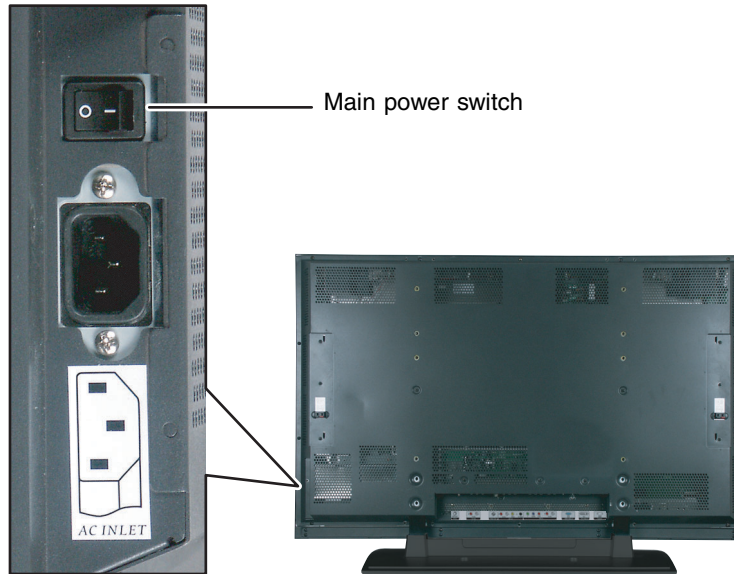
## To turn on your plasma TV:

- 1 Connect the power cord to the power cord connector on the side of your plasma TV, then plug the other end of the power cord into a correctly grounded electrical outlet or surge protector.





- 2 Press the main power switch on the side of your plasma TV. The Status LED on the front turns red and your plasma TV is ready to turn on.



- 3 Press the power button on the front of your plasma TV. The Status LED on the front turns green.



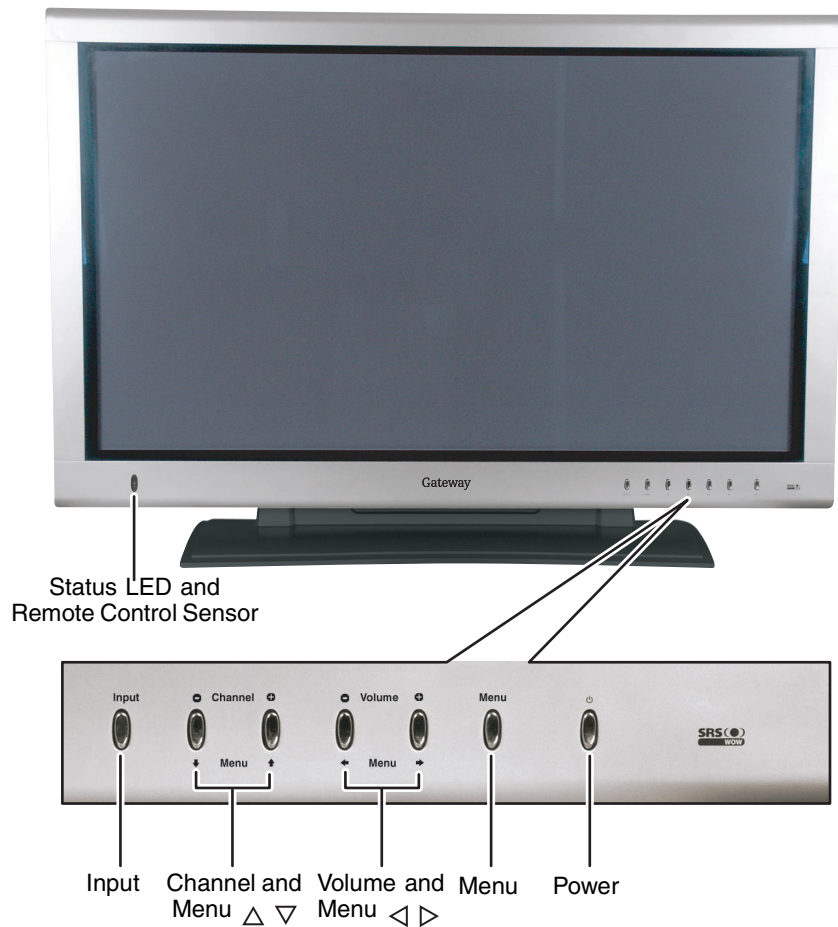
**Warning**











If you will be away for an extended period of time, turn off your plasma TV with the main power switch instead of using the remote control or front POWER button.

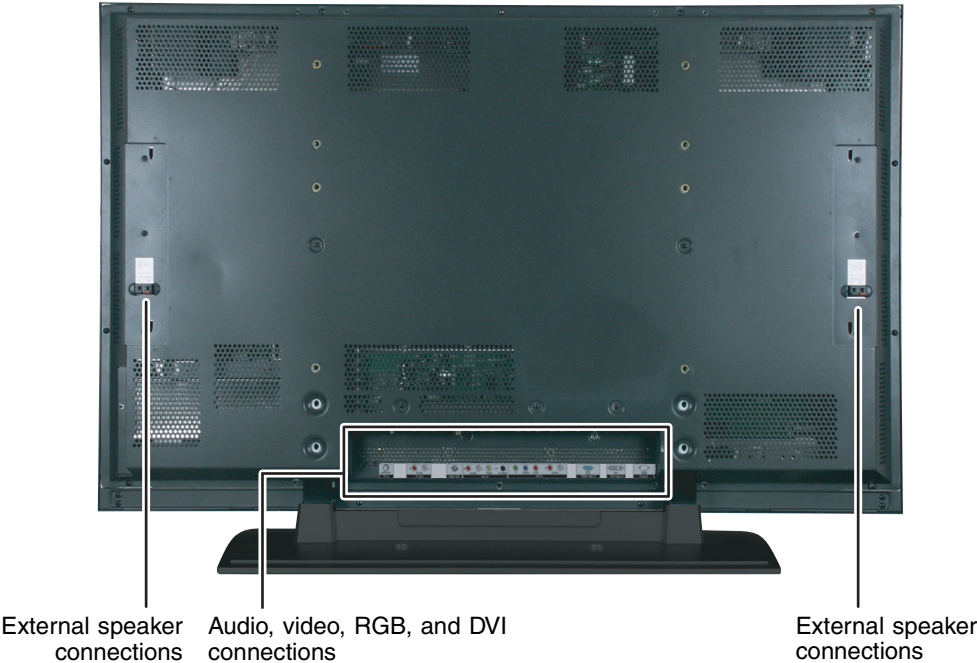
For added protection during a lightning storm or when it is left unattended or unused for long periods of time, unplug your plasma TV from the wall outlet and disconnect the antenna or cable system.

# Front controls



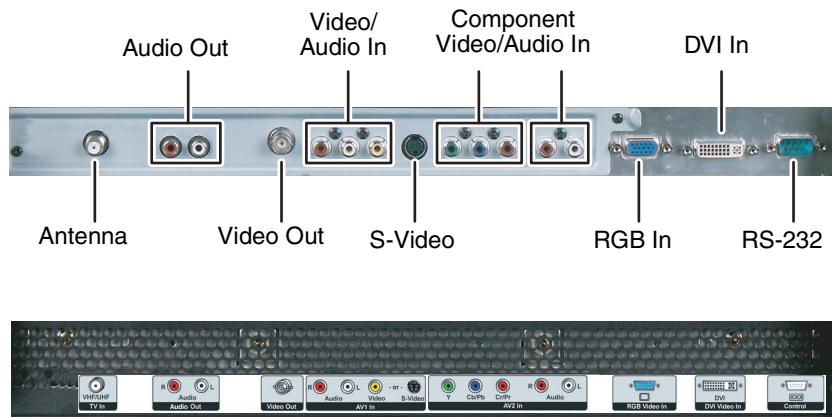
Button	Description
Status LED and Remote control sensor	<p><b>Status LED.</b></p> <ul style="list-style-type: none"> <li>▪ Not lit - No AC power is detected. The main power switch is off or the power cord is disconnected.</li> <li>▪ Solid Red - The main power is on and your plasma TV is off.</li> <li>▪ Solid Green - Your plasma TV is on.</li> </ul> <p><b>Remote Control Sensor.</b> Receives signals from the remote control. Do not block.</p>
Input	Switches between available input sources.
Channel and Menu  	<p><b>Channel.</b> Changes the channel.</p> <p><b>Menu</b>  . Selects on-screen display (OSD) options. For more information, see "Using the OSD" on page 30.</p>
Volume and Menu  	<p><b>Volume.</b> Increases or decreases the volume.</p> <p><b>Menu</b>  . Adjusts on-screen display (OSD) options. For more information, see "Using the OSD" on page 30.</p>
Menu	<p>Opens the OSD.</p> <p>OSD Active: Advances to the next main menu within the OSD. For more information, see "Using the OSD" on page 30.</p>
Power	Turns your plasma TV on and off after the main power switch is turned on. When you turn your plasma TV on or off, wait three seconds before pressing this button again.

# Back panel connections



Connector	Description
External speaker connections	Connects additional external speakers.
Audio, video, RGB and DVI connections	See “Audio, video, RGB, and DVI connections” on page 13.

# Audio, video, RGB, and DVI connections



Connector	Description
Audio Out	Connects to an audio device, such as a receiver.
Video/Audio In	Connects to a composite audio/video device, such as a VCR.
Component Video/Audio In	Connects to a component audio/video device, such as a DVD player.
DVI In	Connects to a DVI video device, such as a computer or set-top box.
Antenna	Connects to a VHF/UHF antenna or cable TV.
Video Out	BNC-style cable connector.
S-Video	Connects to an S-Video device, such as a satellite dish receiver or digital cable box.
RGB In	Connects to an RGB video device, such as a computer or set-top box.
RS-232	Connects to a computer to display the computer image on the plasma TV using customized software (typically used by business, education, or government). For more information see the <i>RS-232 Serial Connection Technical Reference</i> at <a href="http://support.gateway.com">support.gateway.com</a> .





# Connecting Components

## 2

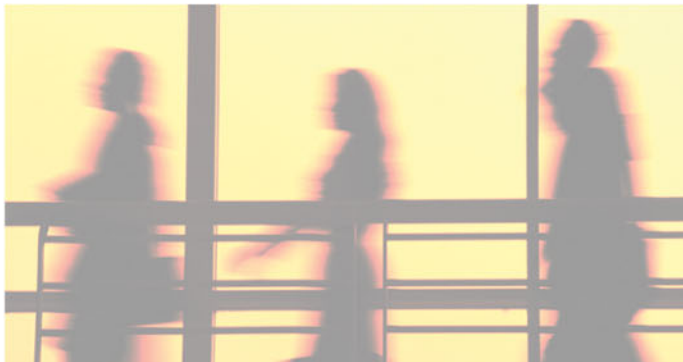
Read this chapter to learn how to connect:

- DVD players
- HDTV decoder set-top boxes
- VCRs
- Off-air TV and cable TV
- Computers

### Warning


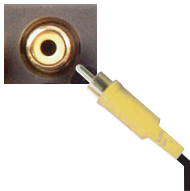

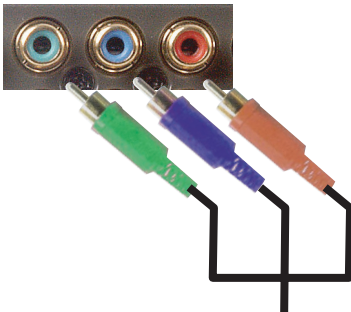


Before connecting any external components, unplug your plasma TV. To restart your plasma TV, see “Turning on your plasma TV” on page 8.



# Understanding video connections

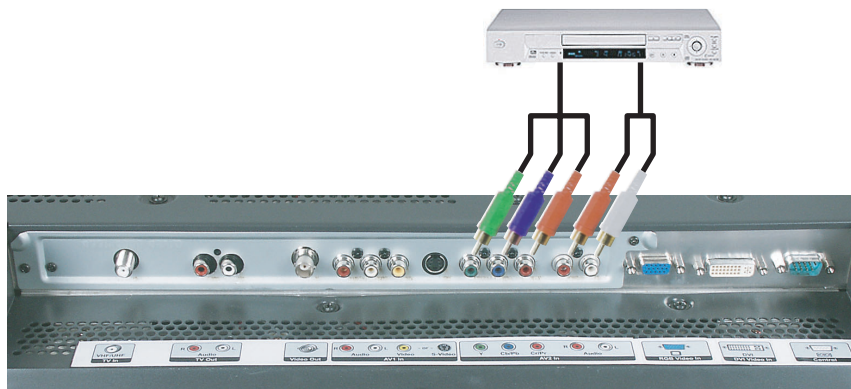
Your plasma TV has four types of standard video connections. You should use the best connection available to get the best display. For example, if your DVD player supports a component video connection, connect the DVD player to your plasma TV using component video instead of composite video or S-Video.

Connection Quality	Cable and Connector	Description
Basic		<b>Coaxial (RF).</b> The video and audio signals are both carried in one cable (the other three connection types only handle video, and require separate connections for sound). Coaxial is the only way to connect an antenna to your plasma TV.
Good		<b>Composite.</b> The video signal is carried through a single "pin." This connection method is the one that is most commonly found on devices.
Better		<b>S-Video.</b> The video signal is split into two signals, black-and-white and color. Text displayed on-screen through this connection will be noticeably sharper than composite or coaxial (RF).
Best		<b>Component.</b> The video signal is split into three signals, two color, and one black-and-white. Use component video to take advantage of the superior picture provided by signal sources as HDTV and <i>progressive</i> DVD.

# Connecting your DVD player

## Using component video (AV2)

 To connect your DVD player using component video:

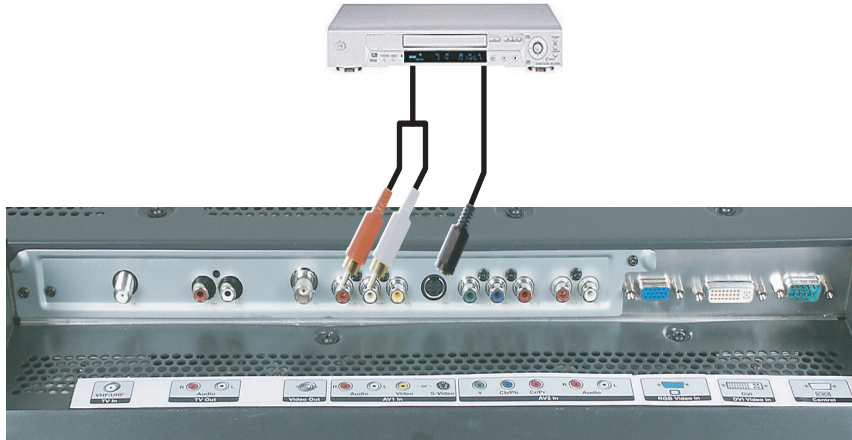


- 1** Connect the green-colored Y jack on the back of your DVD player to the green AV2 jack on the back of your plasma TV.
- 2** Connect the blue-colored  $P_B$  or  $C_B$  jack on the back of your DVD player to the blue AV2 jack on the back of your plasma TV.
- 3** Connect the red-colored  $P_R$  or  $C_R$  jack on the back of your DVD player to the red AV2 jack on the back of your plasma TV.
- 4** Connect the red (R) and white (L) audio jacks on the back of your DVD player to the R AV2 and L AV2 audio jacks on the back of your plasma TV.
- 5** Select the AV2 input using the Input button on the front of your plasma TV.



## Using S-Video (AV1)

▶ To connect your DVD player using S-Video:



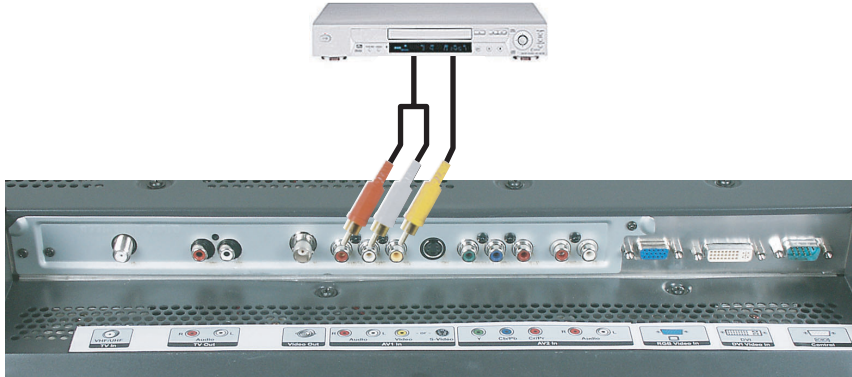
- 1 Connect the S-Video jack on the back of your DVD player to the S-Video AV1 jack on the back of your plasma TV.
- 2 Connect the red (R) and white (L) audio jacks on the back of your DVD player to the R AV1 and L AV1 audio jacks on the back of your plasma TV.
- 3 Select the AV1 (S-Video) input using the Input button on the front of your plasma TV.





## Using composite video (AV1)

▶ To connect your DVD player using composite video:



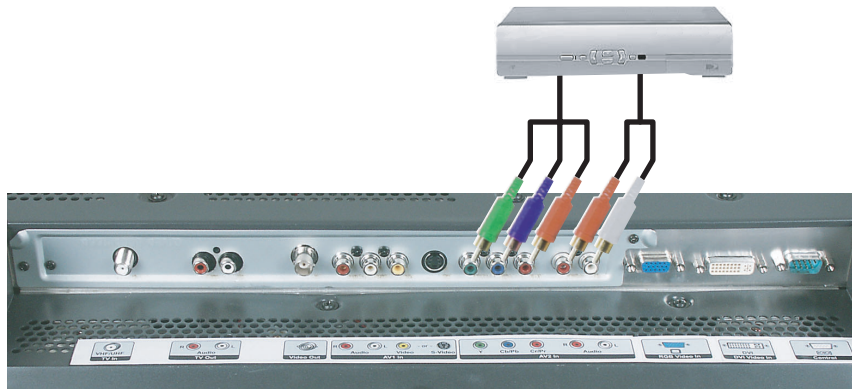
- 1 Connect the yellow video jack on the back of your DVD player to the yellow AV1 video jack on the back of your plasma TV.
- 2 Connect the red (R) and white (L) audio jacks on the back of your DVD player to the R AV1 and L AV1 audio jacks on the back of your plasma TV.
- 3 Select the AV1 (Video) input using the Input button on the front of your plasma TV.



# Connecting your HDTV decoder set-top box

## Using component video (AV2)

▶ To connect your HDTV decoder set-top box using component video:

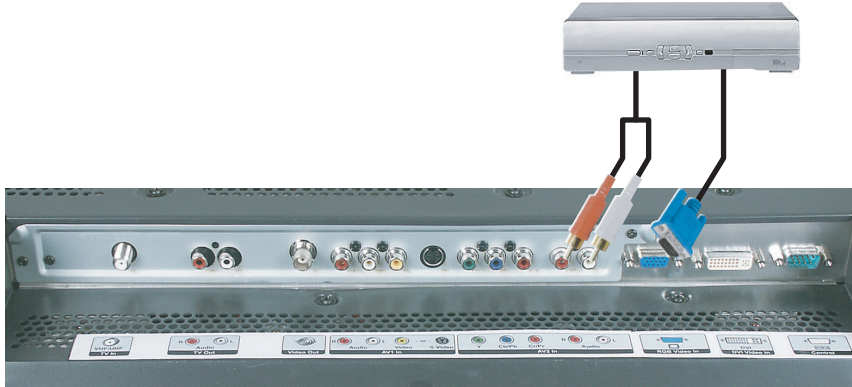


- 1 Connect the green Y jack on the back of your HDTV set-top box to the green AV2 jack on the back of your plasma TV.
- 2 Connect the blue  $P_B$  or  $C_B$  jack on the back of your HDTV set-top box to the blue AV2 jack on the back of your plasma TV.
- 3 Connect the red  $P_R$  or  $C_R$  jack on the back of your HDTV set-top box to the red AV2 jack on the back of your plasma TV.
- 4 Connect the red (R) and white (L) audio jacks on the back of your HDTV set-top box to the R AV2 and L AV2 audio jacks on the back of your plasma TV.
- 5 Select the AV2 input using the Input button on the front of your plasma TV.



## Using RGB video

▶ To connect your HDTV decoder set-top box using RGB video:



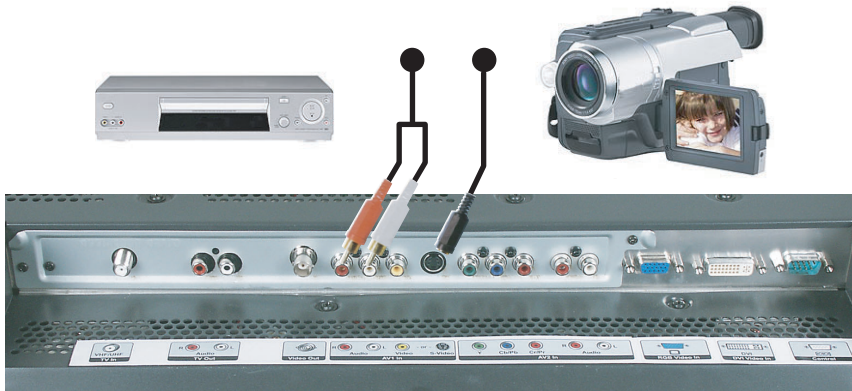
- 1 Connect the 15-pin D-Sub RGB jack on the back of your HDTV set-top box to the RGB-In connector on the back of your plasma TV.
- 2 Connect the red (R) and white (L) audio-out jacks on the back of your HDTV set-top box to the R AV2 and L AV2 audio jacks on the back of your plasma TV.
- 3 Select the RGB input using the Input button on the front of your plasma TV.



# Connecting your VCR or video camera

## Using S-Video (AV1)

▶ To connect your VCR or video camera using S-Video:



- 1 Connect the S-Video jack on the back of your VCR or video camera to the S-Video AV1 jack on the back of your plasma TV.
- 2 Connect the red (R) and white (L) audio jacks on the back of your VCR or video camera to the R AV1 and L AV1 audio jacks on the back of your plasma TV.
- 3 Select the AV1 (S-Video) input using the Input button on the front of your plasma TV.



## Using composite video (AV1)

▶ To connect your VCR or video camera using composite video:



- 1 Connect the yellow video jack on the back of your VCR or video camera to the yellow AV1 video jack on the back of your plasma TV.
- 2 Connect the red (R) and white (L) audio jacks on the back of your VCR or video camera to the R AV1 and L AV1 audio jacks on the back of your plasma TV.
- 3 Select the AV1 (Video) input using the Input button on the front of your plasma TV.



## Using coaxial (RF) audio and video (VCR only)

 To connect your VCR using coaxial (RF) audio and video:



- 1** Connect the “output to TV” (RF out or Antenna out) jack on the back of your VCR to the TV In connector on the back of your plasma TV.
- 2** Select the TV/Cable input using the Input button on the front of your plasma TV.



If you have an off-air antenna or cable box, connect your off-air antenna or cable TV cable to the ANT connector on the back of your VCR.

### Warning



If an outdoor antenna or cable system is connected to your plasma TV, make sure that the antenna or cable system is correctly grounded. For more information, see “Television antenna connectors protection (for systems fitted with TV/cable TV tuner cards)” on page 45.

# Connecting off-air TV or cable TV

## Using coaxial (RF) audio and video

 To connect off-air TV or cable TV using coaxial (RF) audio and video:



- 1 Connect the coaxial (RF) connector from your antenna, cable TV, or cable box to the TV In connector on the back of your plasma TV.
- 2 Select the TV/Cable input using the Input button on the front of your plasma TV.



If you have connected a VCR to the ANT connector on the back of your plasma TV, connect your off-air TV or cable TV cable to the ANT connector on the back of your VCR.

### Warning

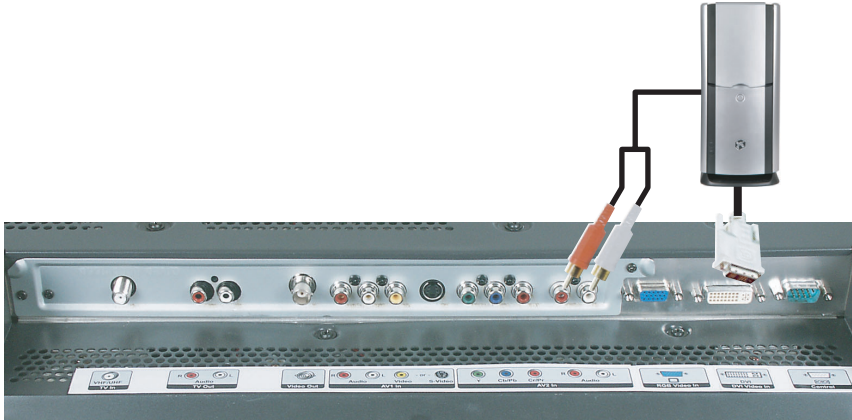


If an outdoor antenna or cable system is connected to your plasma TV, make sure that the antenna or cable system is correctly grounded. For more information, see "Television antenna connectors protection (for systems fitted with TV/cable TV tuner cards)" on page 45.

# Connecting a computer

## Using DVI video

 To connect your computer using DVI video:



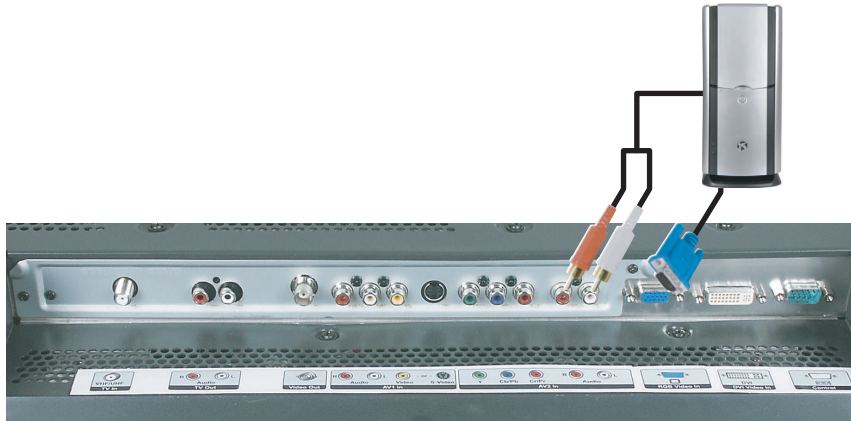
- 1** Connect the DVI connector on your computer to the DVI-In connector on the back of your plasma TV.
- 2** Connect the Audio Out jack on your computer to the L AV2 and R AV2 audio jacks on the back of your plasma TV.
- 3** Select the DVI input using the Input button on the front of your plasma TV.





## Using RGB video


▶ To connect your computer using RGB video:



- 1 Connect the 15-pin D-Sub RGB connector on your computer to the RGB In connector on the back of your plasma TV.
- 2 Connect the Audio Out jack on your computer to the L AV2 and R AV2 audio jacks on the back of your plasma TV.
- 3 Select the RGB input using the Input button on the front of your plasma TV.







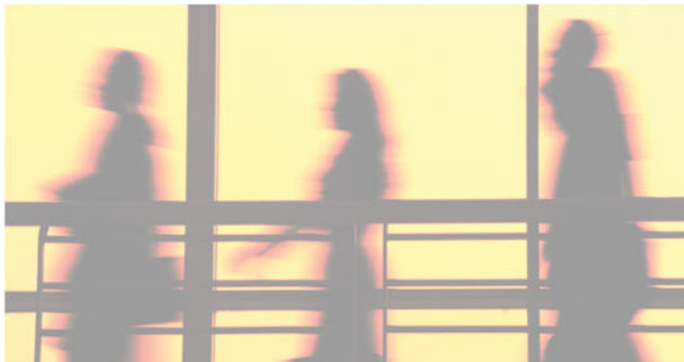
# Adjusting Your Plasma TV Settings

# 3



Read this chapter to learn how to adjust your plasma TV settings from the on-screen display (OSD).

You can also use your remote control to change some settings. For more information, see *Your Gateway Remote Control User's Guide*.



# Using the OSD

Your plasma TV features an on-screen display (OSD) that lets you adjust and save contrast, brightness, and other settings. The TV saves changes you make to the settings, even if you turn off the TV.



## To adjust settings from the OSD:

- 1** Press the **MENU** button on the front of your plasma TV. The OSD opens.
- 2** Press the **MENU** button on the front of your plasma TV to select the menu you want.
- 3** Press the **MENU**  $\triangle$  or  $\nabla$  button on the front of your plasma TV to select a menu option.
- 4** Press the **MENU**  $\triangleleft$  or  $\triangleright$  button on the front of your plasma TV to adjust the option setting.

After the OSD timeout period, the OSD closes.



If you are using TV, AV1, or AV2 for your video source, go to “OSD menus and options (TV, AV1, and AV2 video sources)” on page 31.

If you are using DVI or RGB for your video source, go to “OSD menus and options (DVI or RGB video sources)” on page 34.

# OSD menus and options (TV, AV1, and AV2 video sources)

You can use these OSD menus and options to adjust various settings for your plasma TV.

## OSD Menu

### Setup



## Description

**TV Source.** Sets the source for the tuner.

Select Cable (for cable or a satellite dish) or Antenna.

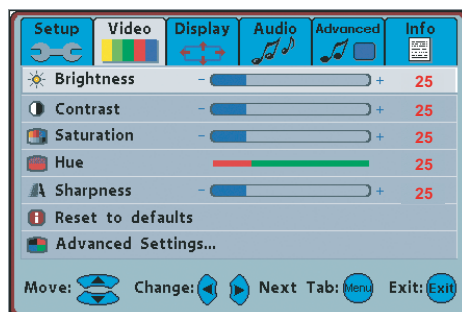
**Channel.** Adds the channel to the channel list.

Erase removes the channel from the channel list.

**V-Chip.** Activates parental controls. You need the remote control to use this option. For more information, see *Your Gateway Remote Control User's Guide*.

**AutoProgram Channels.** When TV is the selected video input source, your plasma TV adds all channels that have a signal to the channel list.

### Video



**Brightness.** Adjusts the brightness of the picture.

You may need to readjust brightness after the plasma TV warms up.

**Contrast.** Adjusts the contrast of the picture.

**Saturation.** Adjusts the color saturation to make colors more intense.

**Hue.** Adjusts the color of flesh tones.

**Sharpness.** Adjusts the amount of detail enhancement.

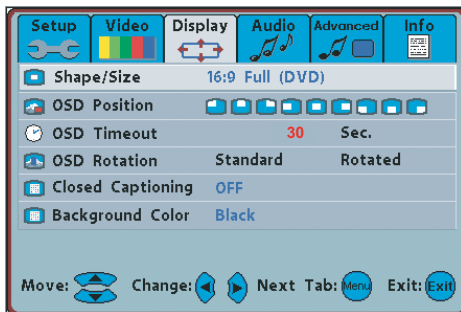
**Reset to defaults.** Resets settings to the factory default.

**Advanced Settings.** Opens a sub-menu that controls:

- **Color Space.** Shifts the color spectrum.
- **Color Temp.** Adjusts the color temperature to three preset modes. You can also customize the red, green and blue separately.
- **Gamma.** Adjust the ratio of black to white.
- **Reset to defaults.** Resets advanced settings to the factory default.

## OSD Menu

### Display



### Description

**Shape/Size.** Adjusts the screen width to 4:3, 16:9, Panorama, or Letterbox viewing mode.

**OSD Position.** Adjusts the position of the OSD within the display image.

**OSD Timeout.** Specifies the number of seconds the OSD menu is displayed before it turns off automatically.

**OSD Rotation.** Turns the OSD display 180°.

**Closed Captioning.** Activates and sets closed captioning.

**Background Color.** Changes the color of the background where a video signal is not displayed.

### Audio



**Treble.** Adjusts the treble. The Line Out option must be set to L-Var to use this option.

**Bass.** Adjusts the bass. The Line Out option must be set to L-Var to use this option.

**Balance.** Adjusts the balance level between the channels. The Line Out option must be set to L-Var to use this option.

**SRS WOW.** Simulates surround sound.

**Speakers.** Turns the built-in or external speaker connectors on or off.

**Line out.** Changes the audio output options for the plasma TV.

L-Fixed: Does not change with TV volume.

L-Var: Lets you adjust the type of output your plasma TV sends to the built-in speakers or the external speaker connectors.

OSD Menu

Description

Advanced



**MTS.** Changes the sound output for TV programs. Switch between Stereo, Sap (Second Audio Program), or Mono for audio simulcasts. The TV program must support the output option.

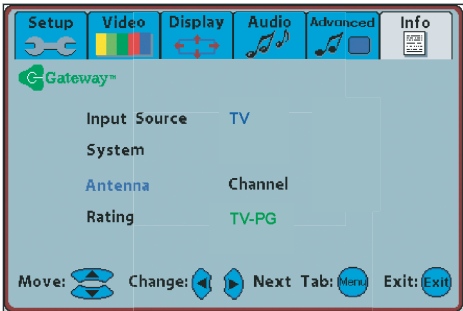
**Image Reverse.** Reverses the display image.

**Image Move.** Moves the display image to prevent image burn-in.

**Move Time.** Sets the time in seconds for image movement.

**Language.** Changes the language of the OSD menu. Choose between English, French, Spanish, and Traditional Chinese.

Info



**Input Source.** Displays the current input source.

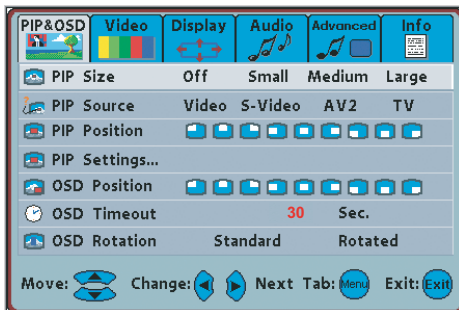
**System.** Displays current system information.

**Antenna.** Displays the current channel in TV mode.

**Rating.** Displays the current program rating.

## OSD menus and options (DVI or RGB video sources)

### PIP&OSD



**PIP Size.** Turns PIP mode on or off and sets the size of the PIP window. When PIP is turned on, you can display two pictures at one time. The picture on the full screen is the main picture. The picture in the window is the sub-picture.

PIP mode only works when the picture displayed on the full screen comes from either the DVI or RGB video input.

The sub-picture video input source can be set to the TV, AV1 (Video), AV1 (S-Video), or AV2.

**PIP Source.** Changes the video input source of the sub-picture when PIP is turned on.

**PIP Position.** Moves the sub-picture within the display image.

**PIP Settings.** Opens a sub-menu that controls:

- **Brightness.** Adjusts the brightness of the sub-picture. You may need to readjust brightness after the plasma TV warms up.
- **Contrast.** Adjusts the contrast of the sub-picture.
- **Saturation.** Adjusts the color saturation to make colors more intense in the sub-picture.
- **Hue.** Adjusts the color of flesh tones in the sub-picture.
- **Sharpness.** Adjusts the amount of detail enhancement in the sub-picture.
- **Reset to defaults.** Resets the sub-picture settings to the factory default.

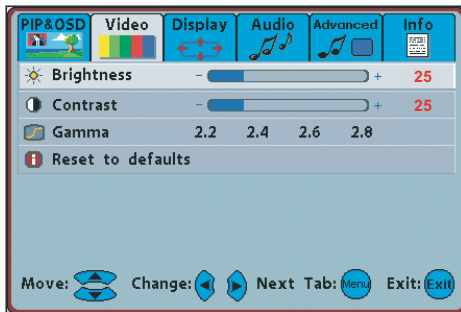
**OSD Position.** Adjusts the position of the OSD within the display image.

**OSD Timeout.** Specifies the number of seconds the OSD menu is displayed before it turns off automatically.

**OSD Rotation.** Turns the OSD display 180°.



## Video



**Brightness.** Adjusts the brightness of the picture.

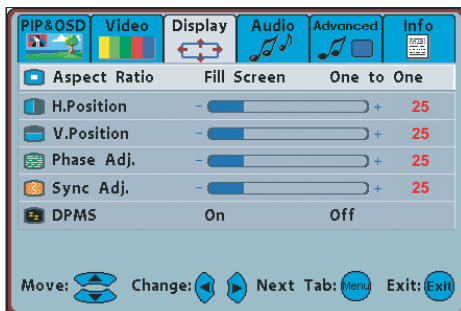
You may need to readjust brightness after the plasma TV warms up.

**Contrast.** Adjusts the contrast of the picture.

**Gamma.** Adjust the ratio of black to white.

**Reset to defaults.** Resets picture settings to the factory default.

## Display



**Aspect Ratio.** Adjusts the screen width to fill the screen or to display one-to-one.

**H.Position.** Adjusts the horizontal screen position.

**V.Position.** Adjusts the vertical screen position.

**Phase Adj.** Removes any horizontal distortion and clears or sharpens the displayed characters.

**Sync Adj.** Removes any vertical distortion and clears or sharpens the displayed characters.

## Audio



**Treble.** Adjusts the treble. The Line Out option must be set to L-Var to use this option.

**Bass.** Adjusts the bass. The Line Out option must be set to L-Var to use this option.

**Balance.** Adjusts the balance level between the channels. The Line Out option must be set to L-Var to use this option.

**SRS WOW.** Simulates surround sound.

**Speakers.** Turns the built-in or external speaker connectors on or off.

**Line out.** Changes the audio output options for the plasma TV.

L-Fixed: TV volume does not change.

L-Var: Lets you adjust the type of output your plasma TV sends to the built-in speakers or the external speaker connectors.

## Advanced



**Image Reverse.** Reverses the display image.

**Image Move.** Moves the display image to prevent image burn-in.

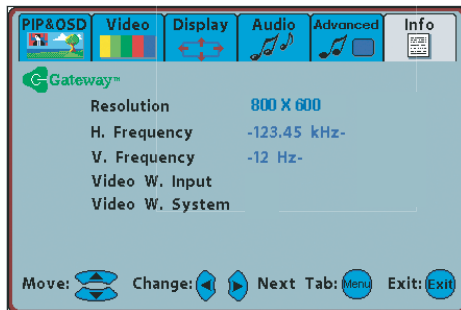
**Move Time.** Sets the time in seconds for image movement.

**Language.** Changes the language of the OSD menu. Choose between English, French, Spanish, and Traditional Chinese.

**Color Space.** Shifts the color spectrum.

**Color Temp.** Adjusts the color temperature to three preset modes. You can also customize the red, green and blue separately.

## Info



**Resolution.** Displays the current screen resolution.

**H. Frequency.** Displays the current horizontal signal frequency.

**V. Frequency.** Displays the current vertical frequency.

**Video W. Input.** Displays the video input source of the PIP window if the PIP window is active.

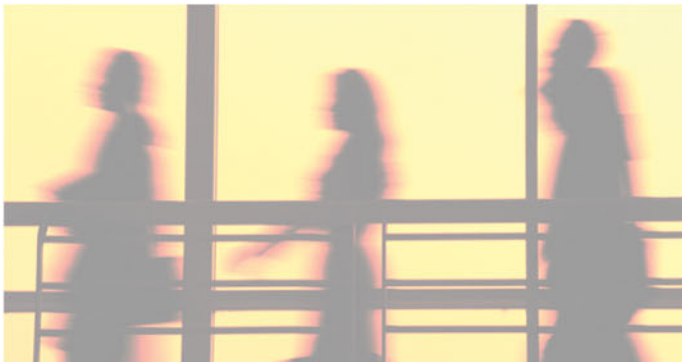
**Video W. System.** Displays system information for the PIP window if active.



# Maintenance and Troubleshooting

# 4

Read this chapter to learn how to maintain and troubleshoot your plasma TV.



# Cleaning and maintenance

## Cleaning the screen

- Do not use substances such as glass cleaners, solvents, and thinners.
- The screen of your plasma TV has been specially treated. Wipe the surface gently using only a cleaning cloth or a soft, lint-free cloth.
- If the surface is particularly dirty, use a soft cloth and water to clean the screen. Squirt a little water on the cloth (never directly on the screen), then wipe the screen with the cloth.

### Warning



The screen of your plasma TV is made of specially coated glass and can be scratched or damaged by abrasive or ammonia-based window cleaners.

Scratches on the bezel or glass are not covered by your warranty.

- Do not scratch or hit the surface of the screen with your fingers or any hard objects.

## Cleaning the exterior

- Your plasma TV is cooled by air circulated through the vents on the case, so keep the vents free of dust. With your plasma TV turned off and unplugged, brush the dust away from the vents with a damp cloth. Be careful not to drip any water into the vents. Do not attempt to clean dust from the inside of your plasma TV.
- Do not use abrasive or solvent cleaners because they can damage the finish on components.
- Do not allow any excessive water or moisture to come into contact with the surface of your plasma TV. If water or moisture gets inside your plasma TV, operating problems and electrical and shock hazards may result.
- Do not scratch or hit the cabinet with your fingers or any hard objects.
- Do not place articles made from rubber or PVC near the cabinet for any extended periods of time.

## Avoiding image burn-in

- Displaying the same stationary image over an extended period of time, such as a black bar, stock ticker, video game, or shopping channel logo, can leave a permanent ghost image (burn-in). Avoid burn-in by mixing your viewing patterns. Do not show the same stationary image for more than 15% of your total TV viewing in any one week.
- Use the Image Move option in the on-screen display (OSD) menus to reduce the chance of image burn-in. For more information, see “Advanced” on page 33 and “Advanced” on page 36.

Your warranty does NOT cover screen burn-in.

## Troubleshooting

Use the following information to solve common problems.

### You cannot see a picture

- Make sure that the power cord is plugged into a grounded electrical outlet.
- Make sure that the main power switch and power button are turned on.
- Make sure that the selected input source is connected to a working input source.
- Press the Input button on the front of your plasma TV until you select the correct input source.
- If your plasma TV is connected to your computer in RGB mode, press any key on your keyboard to “wake” your computer.

### You see a distorted picture or hear unusual sound

- You may be getting interference from electrical appliances, cars, motorcycles, or fluorescent lights. Try moving your plasma TV to another location.

### The color is abnormal

- Make sure that the input source cable is connected securely and correctly to the back of your plasma TV.

### **The picture has abnormal patterns**

- Make sure that the input source cable is attached securely and correctly.
- Make sure that the video input source is within the range of your plasma TV. Compare the video input source's specifications with your plasma TV specifications.

### **The display image does not cover the entire screen**

- If you are using RGB mode, make sure that Aspect Ratio in the OSD is set correctly.
- If you are using TV, AV1, AV2, or component with 480i input, use the WIDE button on the remote control to scroll through various screen modes.

### **You can see a picture but you cannot hear sound**

- Make sure that the volume is not turned down.
- Make sure that the sound is not muted.
- Make sure that your audio input source cables are connected securely and correctly.

### **The monitor has pixels that are always dark**

- Your plasma TV is manufactured using an extremely high level of precision technology. However, sometimes some pixels of your plasma TV may not display. Pixel defects within industry specifications are inherent to this type of product and do not constitute a defective product.

### **An image remains on the screen even after you turn off your plasma TV**

- A still image may have been displayed for an extended period of time causing burn-in. For more information about burn-in, see page 39.

### **You see “noise” or “trash” on the screen**

- When your plasma TV's digital capabilities exceed a digital broadcast signal, the signal is up-converted (increased) to match your plasma TV's display capabilities. Up-converting can cause noise or trash.

### **Screen brightness is diminished**

- Video display devices experience degradation of brightness over the life of the device. Normal brightness degradation is not covered by your warranty.

## **Telephone support**

If this troubleshooting information does not resolve your problem or if you have other questions relating to your plasma TV, call our Service Center at 888-737-MyGW (6949).

For more information about Gateway, visit [www.gateway.com](http://www.gateway.com).







# Safety, Regulatory, and Legal Information

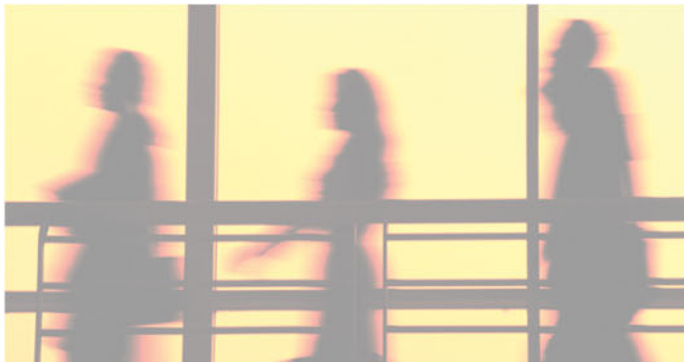
## Regulatory compliance statements

### United States of America

#### Federal Communications Commission (FCC) Unintentional emitter per FCC Part 15

This device has been tested and found to comply with the limits for a Class B digital device, pursuant to Part 15 of the FCC rules. These limits are designed to provide reasonable protection against harmful interference in a residential installation.

# A



This equipment generates, uses, and can radiate radio frequency energy and, if not installed and used in accordance with the instructions, may cause harmful interference to radio or television reception. However, there is no guarantee that interference will not occur in a particular installation. If this equipment does cause interference to radio and television reception, which can be determined by turning the equipment off and on, the user is encouraged to try to correct the interference by one or more of the following measures:

- Reorient or relocate the receiving antenna
- Increase the separation between the equipment and receiver
- Connect the equipment to an outlet on a different circuit from that to which the receiver is connected
- Consult the dealer or an experienced radio/TV technician for help.

**Compliance Accessories:** The accessories associated with this equipment are: shielded video cable when an external monitor is connected. These accessories are required to be used in order to ensure compliance with FCC rules.

## **FCC declaration of conformity**

### **Responsible party:**

Gateway Companies, Inc.  
610 Gateway Drive, North Sioux City, SD 57049  
(605) 232-2000 Fax: (605) 232-2023

### **Product:**

- GTW-P46M103 Plasma TV

This device complies with Part 15 of the FCC Rules. Operation of this product is subject to the following two conditions: (1) this device may not cause harmful interference, and (2) this device must accept any interference received, including interference that may cause undesired operation.

### **Caution**



Changes or modifications not expressly approved by Gateway could void the FCC compliance and negate your authority to operate the product.

## **Canada**

### **Industry Canada (IC)**

#### **Unintentional emitter per ICES-003**

This digital apparatus does not exceed the Class B limits for radio noise emissions from digital apparatus as set out in the radio interference regulations of Industry Canada.

Le présent appareil numérique n'émet pas de bruits radioélectriques dépassant les limites applicables aux appareils numériques de Classe B prescrites dans le règlement sur le brouillage radioélectrique édicté par Industrie Canada.

## Laser safety statement

All Gateway systems equipped with CD and DVD drives comply with the appropriate safety standards, including IEC 825. The laser devices in these components are classified as “Class 1 Laser Products” under a US Department of Health and Human Services (DHHS) Radiation Performance Standard. Should the unit ever need servicing, contact an authorized service location.

### Warning



Use of controls or adjustments or performance of procedures other than those specified in this manual may result in hazardous radiation exposure. To prevent exposure to laser beams, do not try to open the enclosure of a CD or DVD drive.

## California Proposition 65 Warning

### Warning



This product contains chemicals, including lead, known to the State of California to cause cancer and/or birth defects or reproductive harm.

## Television antenna connectors protection (for systems fitted with TV/cable TV tuner cards)

### External television antenna grounding

If an outside antenna or cable system is to be connected to your Gateway PC, make sure that the antenna or cable system is electrically grounded to provide some protection against voltage surges and static charges.

Article 810 of the National Electrical Code, ANSI/NFPA 70, provides information with regard to proper grounding of the mast and supporting structure, grounding of the lead-in wire to an antenna discharge unit, size of grounding conductors, location of antenna discharge unit, connection to grounding electrodes, and requirements for the grounding electrode.

### Lightning protection

For added protection of any Gateway product during a lightning storm or when it is left unattended or unused for long periods of time, unplug the product from the wall outlet and disconnect the antenna or cable system.

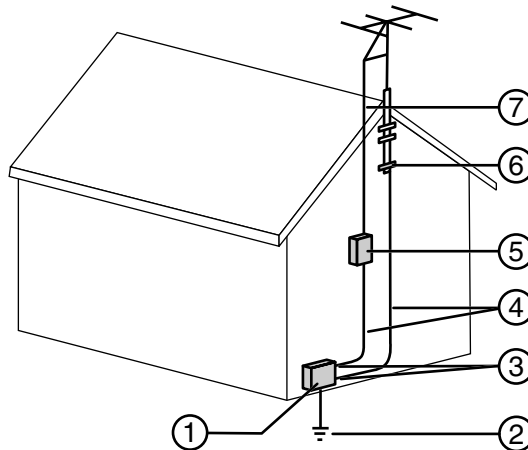
## Power lines

Do not locate the antenna near overhead light or power circuits, or where it could fall into such power lines or circuits.

### Warning



When installing or realigning an outside antenna system, extreme care should be taken to keep from touching such power lines or circuits. Contact with them could be fatal.



**Antenna and satellite grounding**

Reference	Grounding component
1	Electric service equipment
2	Power service grounding electrode system (NEC Art 250, Part H)
3	Ground clamps
4	Grounding conductors (NEC Section 810-21)
5	Antenna discharge unit (NEC Section 810-20)
6	Ground clamp
7	Antenna lead-in wire

# Notices

Copyright © 2003 Gateway, Inc.  
All Rights Reserved  
14303 Gateway Place  
Poway, CA 92064 USA

## All Rights Reserved

This publication is protected by copyright and all rights are reserved. No part of it may be reproduced or transmitted by any means or in any form, without prior consent in writing from Gateway.

The information in this manual has been carefully checked and is believed to be accurate. However, changes are made periodically. These changes are incorporated in newer publication editions. Gateway may improve and/or change products described in this publication at any time. Due to continuing system improvements, Gateway is not responsible for inaccurate information which may appear in this manual. For the latest product updates, consult the Gateway Web site at [www.gateway.com](http://www.gateway.com). In no event will Gateway be liable for direct, indirect, special, exemplary, incidental, or consequential damages resulting from any defect or omission in this manual, even if advised of the possibility of such damages.

In the interest of continued product development, Gateway reserves the right to make improvements in this manual and the products it describes at any time, without notices or obligation.

## Trademark Acknowledgments

1-800-GATEWAY, ActiveCPR, ALR, AnyKey, black-and-white spot design, CrystalScan, Destination, DestiVu, EZ Pad, EZ Point, Field Mouse, Gateway 2000, Gateway Country, gateway.net, Gateway stylized logo, Perfect Scholar, Solo, TelePath, Vivitron, stylized "G" design, and "You've got a friend in the business" slogan are registered trademarks and black-and-white spotted box logo, GATEWAY, Gateway Astro, Gateway@Work, Gateway Connected touch pad, Gateway Connected music player, Gateway Cyber:)Ware, Gateway Education:)Ware, Gateway Flex Case, Gateway Gaming:)Ware, Gateway GoBack, Gateway Gold, Gateway Learning:)Ware, Gateway Magazine, Gateway Micro Server, Gateway Money:)Ware, Gateway Music:)Ware, Gateway Networking Solutions, Gateway Online Network (O.N.) solution, Gateway Photo:)Ware, Gateway Professional PCs, Gateway Profile, Gateway Solo, green stylized GATEWAY, green stylized Gateway logo, Gateway Teacher:)Ware, Gateway Video:)Ware, HelpSpot, InforManager, Just click it!, Learn@Gateway, Kids BackPack, SERVE-TO-ORDER, Server Watchdog, the Spotted G Gateway Logo and the Spotted G Logo, SpotShop, Spotshop.com, and Your:)Ware are trademarks of Gateway, Inc. Intel, Intel Inside logo, and Pentium are registered trademarks and MMX is a trademark of Intel Corporation. Microsoft, MS, MS-DOS, and Windows are trademarks or registered trademarks of Microsoft Corporation. All other product names mentioned herein are used for identification purposes only, and may be the trademarks or registered trademarks of their respective companies.



# Index

## A

- accessories 7
- adjust
  - brightness 31, 34, 35
  - color 31, 34
  - contrast 31, 34, 35
  - shape/size 32, 35
  - sound 32, 35
  - TV settings 31
- antenna connection 13
- audio and video connection 12, 13
- audio in connection 13
- audio out connection 13

## B

- back panel connections 12
- batteries 5
- burn-in 4, 39

## C

- cable kits 7
- cable TV
  - connecting coaxial (RF) 25
- channel up and down buttons 11
- cleaning 38
  - exterior 38
  - screen 38
- closed captioning 32
- coaxial (RF) video 16
  - connection 13
- component video 16
  - connection 13
- composite video 16
  - connection 13
- computer
  - connecting 26
  - connecting DVI video 26
  - connecting RGB video 27
- connecting
  - cable TV 25

- computer 26
- DVD player 17
- HDTV decoder set-top box 20
- off-air TV 25
- power cord 8
- VCR 22
- video camera 22

## connections

- antenna 13
- audio and video 12, 13
- audio in 13
- audio out 13
- back panel 12
- component video 13
- composite video 13
- DVI 12, 13
- DVI in 13
- RGB 12, 13
- RGB in 13
- RS-232 13
- S-Video 13

## D

- DVD player
  - connecting component video 17
  - connecting composite video 19
  - connecting S-Video 18
- DVI connection 12, 13
- DVI in connection 13

## F

- features 2
- front controls 10

## H

- HDTV decoder set-top box
  - connecting component video 20
  - connecting RGB video 21

## **I**

image burn-in 4, 39  
Input button 11

## **M**

main power  
    button 9  
    turning on 9  
maintenance 37, 38  
Menu button 11, 30  
Menu left and right buttons 11, 30  
Menu up and down buttons 11, 30  
mounting kits 7

## **O**

off-air TV  
    connecting coaxial (RF) 25  
on-screen display  
    *see* OSD  
OSD 30  
    brightness 31, 34, 35  
    closed captioning 32  
    contrast 31, 34, 35  
    menu  
        advanced 33, 36  
        audio 32, 35  
        display 32, 35  
        info 33, 36  
        PIP&OSD 34  
        setup 31  
        Video 35  
        video 31  
    Parental Guide 31  
    PIP mode 34  
    Saturation 31, 34  
    screen width 32, 35

## **P**

parental controls 31  
PIP mode 34  
power  
    main switch 9  
    turning on 9

power button 11  
power cord 5  
    connection 8

## **R**

remote control 5  
remote control sensor 11  
Remote control user guide 6  
RGB connection 12, 13  
RGB in connection 13  
RS-232 connection 13

## **S**

safety 3  
screen width 32, 35  
Service Center 41  
setting up  
    safety precautions 3  
stand 7  
stand mount kit 7  
status LED 11  
support 41  
S-Video 16  
    connection 13

## **T**

troubleshooting 37, 39

## **V**

VCR  
    connecting coaxial (RF) 24  
    connecting composite video 23  
    connecting S-Video 22  
video camera  
    connecting composite video 23  
    connecting S-Video 22  
video connections  
    types of 16  
video out connection 13  
volume up and down buttons 11

## **W**

wall 7



wall mount kit 7





MAN MON 46" PLASMA GDE R 4/03



8509161